



Touchless



HF-Filter



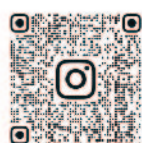
Drawer
glass warmer



Filter element



Fast
Water Dispenser



@LEPAWATER



LINE@



facebook

LEPA
力霸牌飲水機
LEPA Water Dispenser Manufactory

About LEPA

Purpose of LEPA

LEPA is established in 1975, specialized in manufacturing water dispenser, boilers and related filtration equipment. We hold the spirit of "Quality First, Service First", and the purpose of "Reliable healthy drinking water anytime". From the perspectives of clean, safe, eco-friendly and innovation, we give you the promise for good water. We have the certifications from the government: "Water Quality Laboratory "and "Excellent Manufacturer ".

The story of LEPA

LEPA is established at the beginning of the industrial development. The founder realized the importance of "water". Only the clean water can make the body healthy.

Our products spread to every corner of Taiwan. To make the water quality standard in Taiwan and the whole world be the same, First in Taiwan we developed a central drinking water system for exchanging cold and hot water, voice program control water dispenser, and company which qualified by the Green Mark.



Certification



Safety Product Label

The product meets the law or standards of safety, environmental and other technology to protect the benefit of the consumers.



RoHS Certification

RoHS is a product level compliance based on the European Union's Directive, the Restriction of the Use of certain Hazardous Substances in Electrical and Electronic Equipment.



Energy Label

Product energy efficiency which is 10%-15% higher than the standard is energy-saving and lower energy consumption. The quality is assured.



ISO 9001 Certification

First Certification of quality management system in the world to build the system and pursue the honor of customer satisfaction



China Compulsory Certification (CCC)

Only pass this certification, the product meets the requests of safety, EMC environmental etc.



CNS Mark

To ensure the quality that meets the standard of government, the consumers are able to purchase the qualified good product by recognizing the CNS mark.



Taiwan Excellence Label

Authorized selection by Ministry of Economic Affairs, the winner is the excellent product of the industry through five items evaluation of invention, design, quality, marketing and Taiwan-made proof.



Green Mark

Excellent performance of eco-friendliness product in the industry which is recyclable, low-polluting and energy-saving.



ISO 45001 Certification

Build up the career safety and environmental sanitation of the factory to ensure it is sanitary and safe.

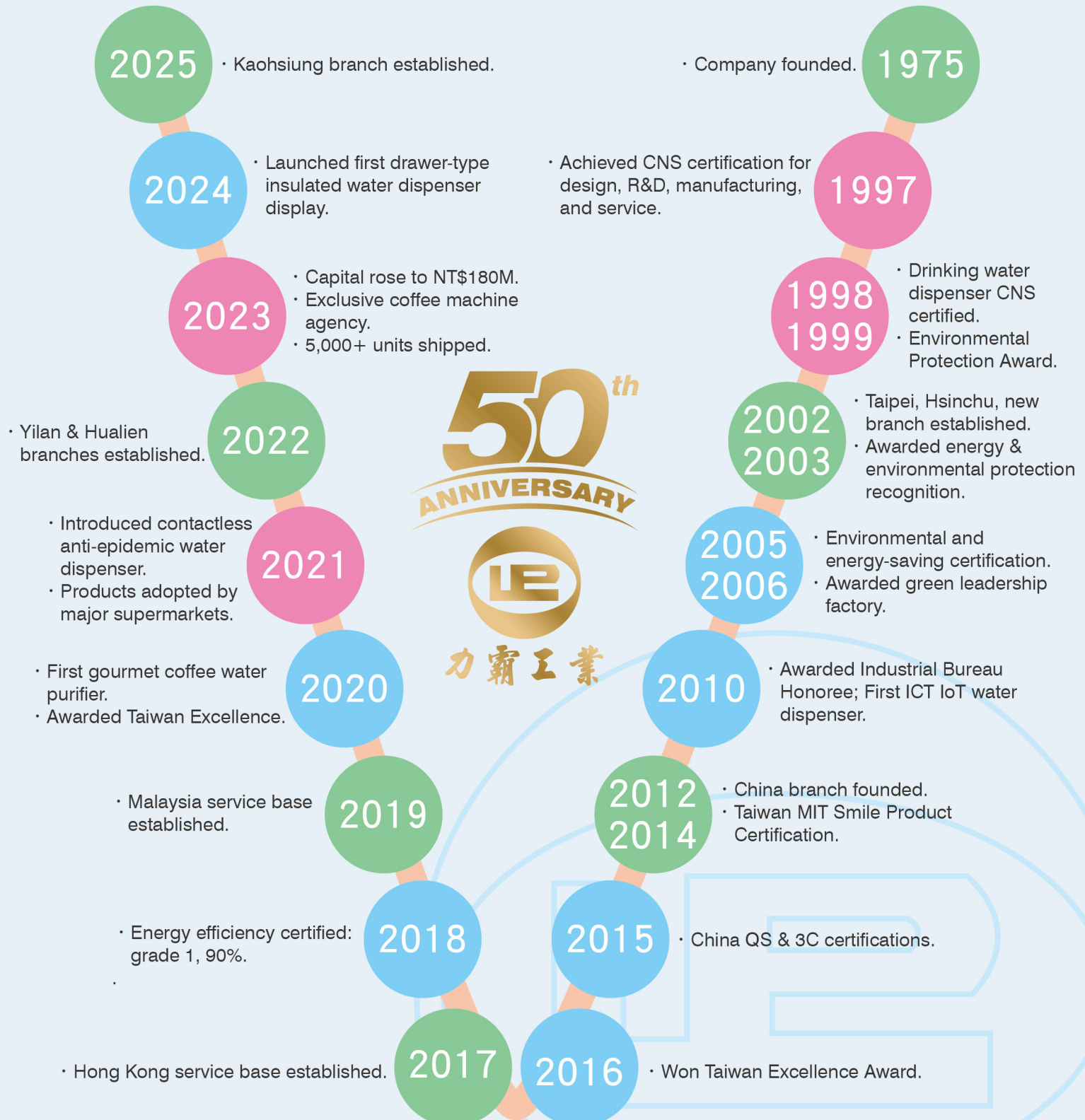


QS Quality standard certification

The company that meets the quality safety standard of manufacturing, processing and producing.



History



Smart

Water Dispenser



LP-CH-9/8 Series
Safe & Clean, Energy-Efficiency



Filter Placement



Increase water intake space

Increase the space for water intake for the availability for bottles



Circular Arcs

Circular arcs design for the machine to prevent from the collision



Material

Use the same material, color-patterned steel board, for the back cover as smart phones, which is anti-dirty and easier to clean.



Water (Hot/Warm/Cold)

Separate pipelines for hot/warm/cold to prevent from scald.



Temperature Display

(Hot Warm Cold) Temperatures separately display to prevent from

Status Alarm

The design is to show the status of the dispenser such as heating, ice-making, breakdown, sterilization and filter replacement.

Buttons

Touch screen buttons, continuous water flow, re-boil, wake-up and etc.

Accessible Design

Braille board, voice prompt (or silent mode), lighting guide



防疫面板

非接触型
Touchless Button

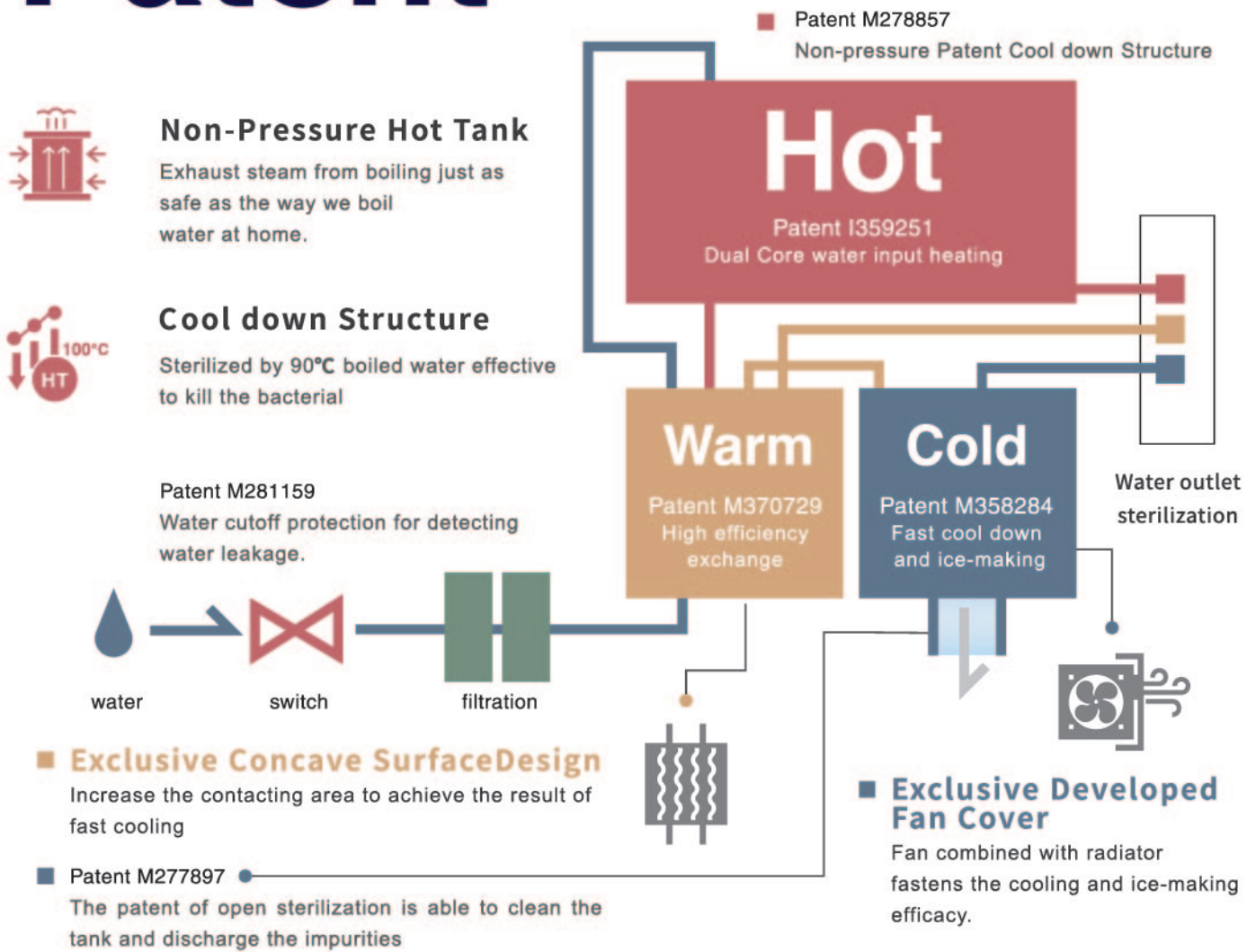


Water Tray **Optional**

LEPA Smart Dispenser going with the touch-screen smart panel, humanized thoughtful design, simple and clear interface, status reminder lights, simple and convenient operation, voice prompt, braille, etc., which provides you with a full range of service.

Patent

Six Patent of LEPA



Dual Core Water input heating

Through the hot water temperature and water level dual core control water input and heating. Qualified by the Invention Bureau, it is able to remain the temperature at 95°C-98°C for the hot water tank in a long time, and provide more water output compared to the traditional heating mode. The water level safety protection is set as well. This is to prevent the tank empty burning or water leaking, and increase the safety for users. With the advantage of heat storage and instant heat, LEPA has the exclusive invent patent.



High Efficiency Exchange Warm Tank

Use the highly efficient exchange tank, the temperature is able to cool down the boiling water to 45°C instantly without any electricity consuming. Patented concave surface exchange structure saves 50% power for the hot tank to heat up.



Fast Cooling and Ice-making

Invent the fan combined with radiator to reduce the wind loss. Then, through the intelligent simulate analysis the cooling curves for cold water and design the best amount of refrigerant and the location for coil to increase the ice-making efficiency.



Rinse Tank and Sterilization Design

Use high temperature sterilization to backwash the tank and discharge scale residues and impurities from the bottom, and produce the fresh drinking water. This is able to remove the E.coli efficiently and keep the water clean in the tank.

Design Thoughtful Design



SETTING

Temperature Setting

Set the temperature according to the customers' needs. Hot water 25°C-100°C, warm water 40°C-60°C, cold water 5°C-30°C



DETECTION

Malfunction Detection

The intelligent detective system is installed. The notification of water shortage, water leakage, over-high temperature, etc.



TEMPERATURE

Temperature Protection

To prevent from drinking the unboil water, the water would be cut when the hot water is below 90 °C. To prevent from the scald, the water will be cut warm water is above 60 °C or cold water is 50 °C



OVER LOW



OVER HIGH



OVER HIGH



SLEEP

On/off Setting

Turning on before work, turning off after work and halting on weekends automatically.



ENERGY SAVING

Energy-saving

Being tested by the Government Energy-saving Bureau, the power consumes 24hr in static is about 1 degree.

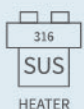


STATUS

Status Reminding (optional)

Use flow metering, filter replacement countdown reminder, suspended solids (TDS) and water quality detection to keep up on the situation.

Safety Safety Protection



316 stainless Heater

The 316 stainless steel which is much sturdier, and more rust-resistance to ensure the water quality safe and clean.



Power Leakage Protection

Through the accurate sensor design, when the power is detected leaking, the machine would cutoff in 0.1 sec. In the meantime, the earthing device which is set in the machine would lead the micro static electricity to the ground.



LEAKING

Water Leakage Protection

Use electric detective panel for better detection of the water leakage and to prevent the accident happen.



SHORTAGE

Water Shortage Protection

The machine stops heating up when the water lever is too low. to prevent the danger of the heater empty burning.



OVER HEAT

Over-heating Protection

When the temperature is at 105°C and heating up for more than 10 min., the system would force the heating to stop.



HOT KEY

Child Safety Lock

To prevent the scalded by pressing the hot water accidentally, the users have to press the unlock before using the hot water.



915 Hot/Warm/Cold Smart Dispenser
916 Hot/Warm Smart Dispenser

| Dimension | W41/D50/H140 cm
 | Capacity | H24/W12/C5 L



915 Hot/Warm/Cold Smart Dispenser
916 Hot/Warm Smart Dispenser

| Dimension | W41/D50/H140 cm
 | Capacity | H24/W12/C5 L



915 Hot/Warm/Cold Smart Dispenser
916 Hot/Warm Smart Dispenser

| Dimension | W43/D50/H140 cm
 | Capacity | H24/W12/C5 L



909 Hot/Warm/Cold Smart Dispenser
910 Hot/Warm Smart Dispenser

| Dimension | W41/D50/H140 cm
 | Capacity | H30/W12/C5 L



809 Hot/Warm/Cold Smart Dispenser
810 Hot/Warm Smart Dispenser

| Dimension | W41/D50/H140 cm
 | Capacity | H30/W12/C5 L



901 Hot/Warm/Cold Smart Dispenser
902 Hot/Warm Smart Dispenser

| Dimension | W38/D40/H124 cm
 | Capacity | H12/W5/C1.5L

Remark: Voltage and Power within 110V 1500W or 220V 2000W 60Hz. Hot/warm model does not have cold water capacity and water output.



801C Hot/Warm/Cold Smart Dispenser
802C Hot/Warm Smart Dispenser

| Dimension | W41/D49/H70 cm
 | Capacity | H12/W5/C1.5 L

801C Hot/Warm/Cold Smart Dispenser
802C Hot/Warm Smart Dispenser

| Dimension | W41/D49/H70 cm
 | Capacity | H12/W5/C1.5 L

2017A Hot/Warm Smart Dispenser

| Dimension | W26/D37/H62 cm
 | Capacity | 12 L

■ Remark: Voltage and Power within 110V 1500W or 220V 2000W 60Hz. Hot/warm model does not have cold water capacity and water output.



Infrared Touchless

The room temperature of drinking water



LP-RUV-W

Wall-hung Infrared Touchless Dispenser

| Dimension | W41/D16/H70 cm
| Power | 5A



LP-RUV-F

Floor type Infrared Touchless Dispenser

| Dimension | W41/D50/H140 cm
| Power | 5A



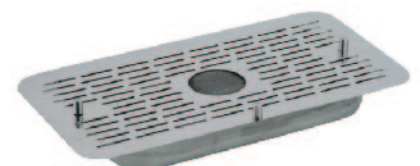
Infrared Touchless



(UV-2GPM)
(Optional) UVC-6



Counter (Optional)



Water Tray(optional)

Water Dispenser

LP-CH-2001/2002 Series



Wide angle water plate

Filter Placement

Features

- Re-boil and Force Water Input buttons are set
- Hot water temperature and water level display
- Two-stage on/off is settable for saving energy.
- Patented Dual Core water input heating.

2001 Hot/Warm/Cold Mechanical Dispenser

2002 Hot/Warm Mechanical Dispenser

| Dimension | W41/D43/H140 cm

| Capacity | H20/W10/C4L

Heavy-duty, Quality Guaranteed

Temperature Display

Water level Display

Material

Use the same material, color-patterned steel board, for the back cover as smart phones, which is anti-dirty and easier to clean.

Mechanical Faucet

Mechanical faucet is easy to manipulate. Separate water outputs for hot/warm/cold to prevent the users from scalding.



Remark: Voltage and Power within 110V 1500W or 220V 2000W 60Hz. Hot/warm model does not have cold water capacity and water output. Model with A is with the RO filtration.



LP-CH-717~718 Series

- 717 Hot/Warm/Cold Mechanical Dispenser
- 718 Hot/Warm Mechanical Dispenser

| Dimension | W39/D31/H126 cm
| Capacity | H6/C5L

Features

- Non-pressure hot tank
- Temperature circuit breaker assures the safety.
- Use stainless steel material for the machine. Strong and sturdy.

Fast Water Dispenser



Dual Core Water input heating(Patent)

Through the hot water temperature and water level dual core control water input and heating. Qualified by the Invention Bureau, it is able to remain the temperature at 95°C-98°C for the hot water tank in a long time, and provide more water output compared to the traditional heating mode. The water level safety protection is set as well. This is to prevent the tank empty burning or water leaking, and increase the safety for users. With the advantage of heat storage and instant heat, LEPA has the exclusive invent patent.



Power Leakage Protection

Through the accurate sensor design, when the power is detected leaking, the machine would cutoff in 0.1 sec. In the meantime, the earthing device which is set in the machine would lead the micro static electricity to the ground.



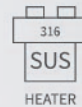
Water Shortage Protection

The machine stops heating up when the water level is too low. to prevent the danger of the heater empty burning



Over-heating Protection

When the temperature is at 105°C and heating up for more than 10 min., the system would force the heating to stop.



316 stainless Heater

The 316 stainless steel which is much sturdier, and more rust-resistance to ensure the water quality safe and clean.



Stainless steel pressing faucet

Special stainless steel spring is acid and alkali resistance and corrosion-proof. High strength pressing handle is suitable for any commercial site.



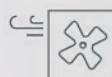
Child Safety Lock Optional

To prevent the scalded by pressing the hot water accidentally, the users have to press the unlock before using the hot water.



On/Off Setting Optional

Turning on before work, turning off after work and halting on weekends automatically



Fast Cooling and Ice-making Optional

To increase the ice-making Fan combined with radiator to reduce the wind loss. Then through the intelligent simulate analysis the cooling cures for cold water and design the best amount of refrigerant and the location for coil

Desktop Water Dispenser



LP-CH-2016

| Dimension | W19/D26/H53 cm
| Capacity | H6L



LP-CH-2017

| Dimension | W26/D37/H53 cm
| Capacity | H12L



LP-CH-2018

| Dimension | W26/D37/H69 cm
| Capacity | H20L

■ Remark: Voltage and Power within 110V 1500W or 220V 2000W 60Hz.
LP-CH-2017、LP-CH-2018 Hot and cold dual-use optional

Lighter case, superior efficacy.



Faucet for Under-Counter Only Optional



Dual-handle hot and cold mixer faucet

| Dimension | H25.4 cm
| Dispensing height | 19 cm



Single-handle hot and cold mixer faucet

| Dimension | H25 cm
| Dispensing height | 19 cm



Push-button hot and cold mixer faucet

| Dimension | H30 cm
| Dispensing height | 24 cm

Under Sink Water Dispenser



LP-CH-2015

| Dimension | W30/D21/H37 cm
| Capacity | H6L



LP-CH-2016

| Dimension | W19/D26/H53 cm
| Capacity | H6L



LP-CH-2017

| Dimension | W29/D37/H53 cm
| Capacity | H12L

Remark:Voltage and Power within 110V 1500W or 220V 2000W

Boilers

LP-C-15~60A

Specification

| Material |

Use SUS304 stainless steel for tanks.

| Voltage | AC 220V

Features

| Temperature | Hot 90-100°C

| Water Intake Method |

Single 1/2" water outlet with the rust-proof material, and heat-resistant handle. Water lock is optional.

| The Structure of control |

Automatically water input and electricity cutoff function is included to force the water inputs and cut off the electricity.

| Lighting Guild |

Hot water temperature display, power, water input, heat up, re-boil, water level.

| Safety Design |

Overheating, power leakage, water leakage, water cutoff protection for detecting water or power leakage.



Panel



Safety Lock **Optional**

| Model | LP-C-15A | LP-C-20A | LP-C-30A | LP-C-40A | LP-C-50A | LP-C-60A |
|-------------------|----------|-----------|-----------|-----------|-----------|-----------|
| Capacity | 15gallon | 20gallon | 30gallon | 40gallon | 50gallon | 60gallon |
| Power | 4KW | 4KW | 4KW | 6KW | 6KW | 6KW |
| Dimension | 40×40×83 | 45×45×135 | 49×49×135 | 49×49×155 | 59×59×145 | 59×59×155 |
| Dispensing height | 17CM | 42CM | 42CM | 62CM | 52CM | 52CM |

WxDxH (cm)

Filter

Fiber Filter LP-WF-PP

Filter out the mud, rust iron and impurities etc. solid precipitates



02



04



19



A

Carbon Filter LP-WF-CTO

Filter out the chlorine, discoloration, unpleasant scent, Dioxyethylene, bleach, pesticide, and Trihalomethane.



08



05



20



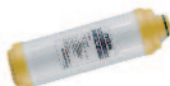
B

Granules Carbon Filter LP-WF-AC

Filter out the chlorine, discoloration, unpleasant scent, Dioxyethylene, bleach, pesticide, and Trihalomethane.



09



06



14



C

Carbon Silver filter LP-WF-AG

The active carbon filter material of porous coconut shell can increase the surface area of adsorption, the main function is to remove organic, inorganic and colored and odorous substances from the water, and use silver ions to achieve sterilization effect.



07



10



15



D

Rinse filter

Adsorb the calcium, Magnesium ions, calcareous, eliminate white water suspended matter of scaling.



LP-WF-RS

Reverse Osmosis membrane Filter

RO membrane Filter Through 0.0001micron osmotic pressure, filter out the bacterial, heavy metals and chemical pollutants.



LP-WF-RO

Ultrafiltration membrane filter

Through different pressure inside and outside to let the heparin pass through the membrane, filter out the algae, parasites, bacterial, and virus.



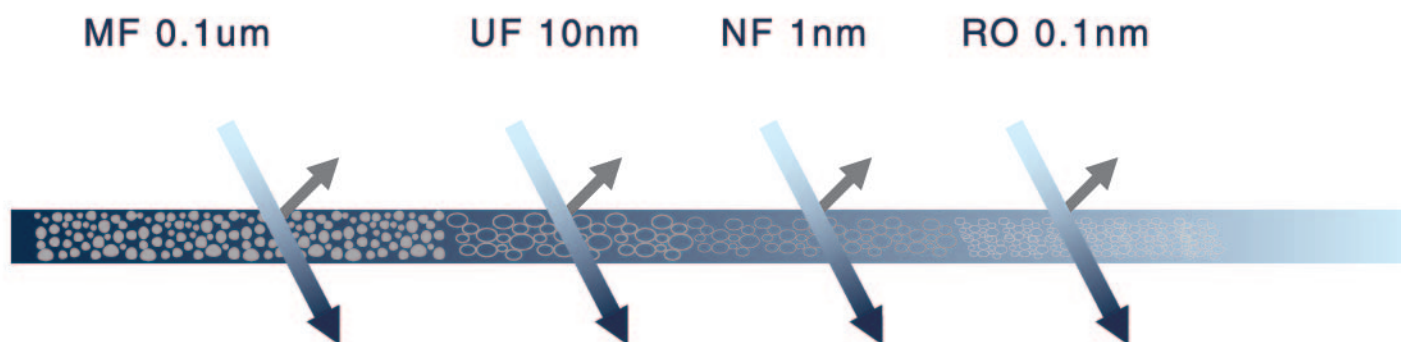
LP-WF-PU

Ultraviolet light

The contracture of DNA and RNA is destroyed by irradiated by the UV-C, to make the bacterial, virus, mold etc. single cell microorganism die.



UV-2GPM



Microfiltration (MF) Description

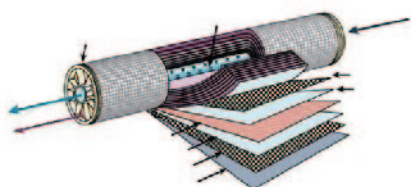
Filter accuracy is generally 0.1-50 microns, common fiber filter, ceramic filter, etc. belong to the category of microfiltration, for simple coarse filtration, filtration of sediment and other large particles of impurities in the water.

① **fiber cotton core**: generally only used for the requirements of coarse filtration, removal of water sediment, rust and other large particles of material.

② **ceramic filter**: the minimum filtration accuracy is only 0.1 microns, usually small flow, not easy to clean.

Nano filtration (NF) Description

Filter precision between ultrafiltration and reverse osmosis, desalination rate is lower than reverse osmosis, is also a need to power, pressure membrane separation technology, can effectively filter out calcium and magnesium ions, through the combination of nanofiltration film and osmosis membrane technology, can adjust the water hardness index.

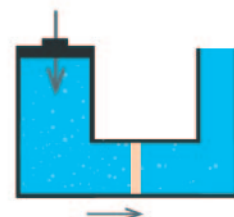


Ultrafiltration (UF) Description

Filter accuracy in 0.001-0.1 microns, is a membrane separation technology using pressure differential, can filter out the water rust, sediment, suspension, colloids, bacteria, macromolecule organic matter and other harmful substances, and can retain some mineral elements beneficial to the human body, can be rinsed and back flush, not easy to block, relatively long service life, Ultrafiltration does not require power-up and pressure, and can be filtered by water

Reverse Osmosis (RO) Description

RO is the abbreviation of Reverse Osmosis membrane, pressure on the high concentration side, so that the solution flows to a low solubility, the direction of this flow is opposite to the original flow direction, so called reverse osmosis, by the interception of semi-permeable membrane, the solute is separated from the solvent, because the RO membrane aperture is 0.0001 microns, impurities and heavy metals can be discharged by wastewater pipes, effective treatment of salts (such as calcium, magnesium and other hardness impurities), heavy metals, chemical residues, inorganic ions, bacteria, viruses, organic matter and glue and other impurities removed.



LP-HF-PU

The use of stainless steel shell built-in ultrafiltration membrane as the core filter material, filtration accuracy of 0.01 microns, can effectively remove the water sediment, rust, colloids, bacteria, macromolecule organic matter and other harmful substances, do not need electricity will not discharge wastewater



Specification

Dimension: W53 X D13.5 X H27 CM

Flow : 6 LPM

Caliber : 1/2 "

Capacity : 40L



KD銅合金



活性碳椰殼

First Hollow Fiber Filter (PU)

By means of internal and external pressure difference, low molecular weight material through the film, can filter out algae, parasites, bacteria, viruses, and with a fully automatic flushing function.

Second KDF Carbon Filter (CK)

The active carbon filter material of porous coconut shell can increase the surface area of adsorption, the main function is to remove organic, inorganic and colored and odorous substances from the water, and the use of KDF can remove heavy metals from the water, inhibit the biological reproduction of the water, and reduce the mineral hard scale to form crystallization.

High Flow Antibacterial Filtration Equipment

| | |
|---------------|---|
| First Filter | Precision filter and scale inhibitor |
| Second Filter | Remove rust, impurities, absorbing heavy metals, discoloration and unpleasant scent and remain chlorine. |
| Third Filter | Through the positive electricity price adsorption effect to remove the virus and bacterial in the water. |
| Fourth Filter | Ultrafiltration filter removes virus and suspended particulate matter. |
| Fifth Filter | Through the positive electricity price adsorption effect to remove the virus and bacterial third level sterilization for ensuring the safety of drinking water. |



Whole Household Stainless Steel Filtration Tank

| | | |
|-----------------|-------------|-------------|
| Flow Rate | 60GPM | 90GPM |
| Filter | 14PCS | 21PCS |
| Inlet Diameter | 2" | 2" |
| Outlet Diameter | 3/4" | 3/4" |
| Diameter | 33CM X 33CM | 33CM X 33CM |
| Height | 92CM | 122CM |



Whole Household Automatic Filtration Tank

| | | | |
|----------|--------------|-----------|----------------------------------|
| Voltage | 110V or 220V | Control | With automatic backwash function |
| Material | Glass Fiber | Dimension | Diameter 36 x Height 165cm |



Water Filtration Equipment

HF-GS



HF-2G



HF-3G



Specification

| Model | HF-GS | HF-2G | HF-3G |
|-----------------|---------------------|---------------------|---------------------|
| Dimensions | 11(W)×10(D)×52(H)cm | 22(W)×10(D)×52(H)cm | 32(W)×10(D)×52(H)cm |
| Flow Rate | 15LPM | 13LPM | 12LPM |
| Inlet Diameter | 1/2" | 1/2" | 1/2" |
| Outlet Diameter | 1/2" | 1/2" | 1/2" |

Filter Material Description

- **Fiber Filter Cartridge LP-HF-GP**

Material: Polypropylene.

Function: Removes large particulate impurities from water.

- **Carbon Block Filter Cartridge – LP-HF-GC**

Material: Coconut shell activated carbon.

Function: Effectively adsorbs chlorine, color, and odors from water.

- **Silver-impregnated Carbon Filter Cartridge – LP-HF-GS**

Material: Coconut shell activated carbon with silver ions.

Function: Silver ions (Ag⁺) disrupt bacterial DNA and inhibit protein formation, preventing bacterial metabolism and reproduction, achieving a sterilization effect.

Quality Standard

- BSMI water purifier certified.
- NSF-certified filter material.

Remarks: Applicable for water with a TDS level of less than 100 ppm.

RO Water Filtration Equipment

LP-HF-R5



Specification

| Model | LP-HF-R5 | LP-HF-R4 |
|------------------|---------------------------|--------------|
| Dimensions | 48 x 17 x 44 | 36 x 15 x 40 |
| Voltage | AC 110V or 220V, 50~ 60Hz | |
| Current | 5A | |
| Water Production | 1.5 LPM | 1 LPM |
| Storage Capacity | Optional storage tank | |
| Inlet Diameter | 3/8" | |
| Outlet Diameter | 3/8" | |
| Drain Diameter | 1/4" | |

Remarks: Dimension (W×D×H) cm

LP-HF-R4



Features

- Compact design with powerful functionality.
- Equipped with leak detection safety system.
- Equipped with continuous water production anomaly detection.
- Optional controller upgrade for enhanced monitoring.
- Optional patented water quality adjustment to ensure consistent beverage flavor.
- Expandable design to increase water production capacity.

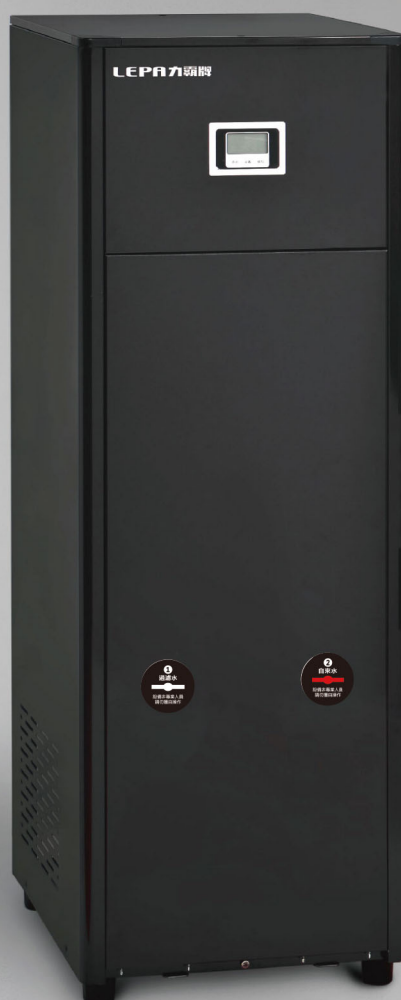
Quality Standard

- Coliform ≤ 6 CFU/100ml.
- BSMI water purifier certified.
- NSF-certified filter material.

Commercial high flow pure water equipment

LP-HF-R8

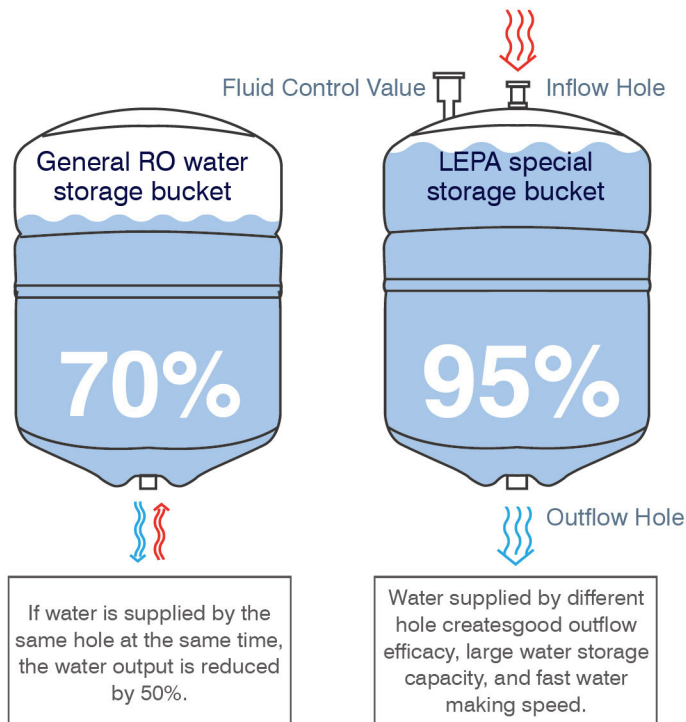
| Voltage | AC 110V / 220V 60H
| Power | 15A
| Dimensions | 41(W)×43(D)×120(H)cm



Feature Function Description

Large Water Storage

The design of Top-in and bottom-out split flow creates almost no loss of water storage.



Long Filter Life

Using reverse osmosis water to backwash can reduce filter material cost and environmental pollution.

| | Test-Condition | Drinking Water Law | Safety Multiple |
|-----------------|----------------|--------------------|-----------------|
| TDS (ppm) | 4000 - 5000 | < 500 | 10 times |
| Turbidity (ppm) | 750 | < 300 | 2.5 times |
| Hardness (NTU) | 35 - 45 | < 2 | 22 times |

Test Standard

- The NSF/ANSI 42/58 destructive test has passed by the government accredited laboratory.

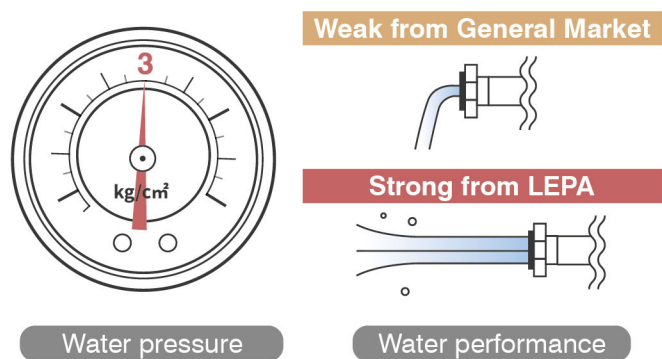
Maintain 98% treatment efficiency under extremely poor water quality environment.

| Cycles | Pressure | Processing Flow Rate | | | Turbidity reduction (%) | TSD reduction (%) | Particle reduction (%) | | Hardness (ppm) |
|--------|----------|----------------------|-----|-----------------------|-------------------------|-------------------|------------------------|---------|----------------|
| | | Beginning | Now | Flow rate maintenance | | | <0.5 um | 0.5-1um | |
| 326 | 60 | 3.8 | 3.4 | 89% | 99.6 | 98.8 | 99.7 | 99.9 | 21 |

Test Standard

Strong water outlet pressure

The motor is propelled, and the water pressure is strong.



Water quality adjustment

The water quality can be adjusted according to the needs to increase the beverage flavor.



Fast Water production

Parallel drive, fast water production.



Less water wastes

save water bills and cherish water resources.

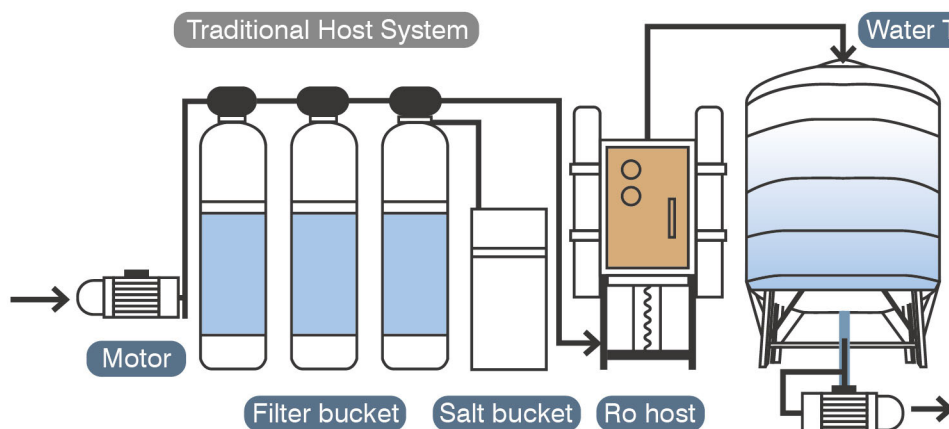


Save Space

The water storage bucket and the filtering.

Fast construction

Convenient construction, installation is completed in about 30 minutes.



UP
Upgrade



Management

LPM
F-002000

Water Production Capacity

GAL
0-000008

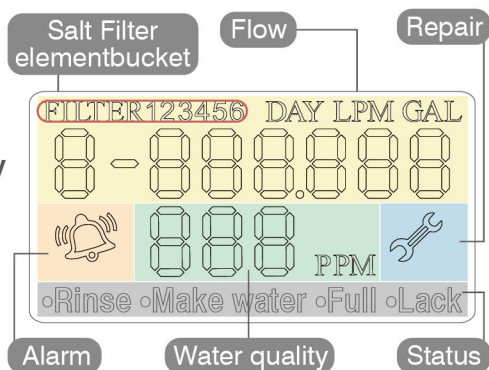
Total usage

DAY
1-000009

Total usage time

PPM
008

TDS water quality information



FILTER1 GAL
2-003000

Remaining amount of filter element

FILTER1 DAY
3-000 188

Remaining time of filter

FILTER 2 GAL
2-000000

Filter flow arrival

FILTER 2 DAY
3-000.000

Filter time arrival

Alarm

Water shortage alarm

Stop the motor from starting, and prevent the motor from idling damage.

300 PPM

TDS value alarm

E02

Abnormal flow

E05

Insufficient flow hint

1st Hollow fiber filter

The use of reverse osmosis water backwashing solves the problem produced by traditional washing method across tap water. The more you wash, the dirtier you get in places with poor water quality or groundwater areas, can effectively extend the life of the filter material and reduce environmental pollution by using different levels of washing according to different water quality. The main target is to filter out impurities, mud dirt and dimensional particles in water.



LP-WF-PU

2nd Activated carbon filter

Using coconut shell activated carbon as the filter material, the porous feature increases the surface area for adsorption. It mainly filters out the residual chlorine in tap water from organic and inorganic substances in filtered water, and removes peculiar smell and odor substances.



LP-WF-CB

The 3rd and 4th Reverse osmosis membrane filter

Effectively remove impurities such as salt (including calcium, magnesium, and other hardness impurities), heavy metals, chemical residues, inorganic ions, bacteria, viruses, organic matter, and colloids. Through ion technology, the divalent ions in the water can be screened and filtered to different degrees, and some monovalent ions are retained.



LP-HF-R4

5th Nano sterilization filter

Through the nano-aluminum fiber structure, it produces a positive electrovalence adsorption effect in the water, without working pressure restrictions, filtering out bacteria, endotoxins, chemical and pharmaceutical pollutants.



LP-WF-DN

Optional Waste water recorder / Alert delivery / Expansion of water storage tank / Heating

Hot Dog Machine

LP-HD-02



Specification

| Model | LP-HD-02 | LP-HD-03 |
|-----------|--------------|--------------|
| Voltage | 110V | 220V |
| Power | 1600W | 1700W |
| Dimension | 44 x 46 x 35 | 60 x 46 x 35 |
| Rollers | 10 rod | 11 rod |
| Capacity | 18 rod | 30 rod |

Remarks: Dimension (W×D×H) cm

Features

- Two-stage temperature control with heat preservation in the front zone and heating in the rear zone.
- Supports mode switching for the entire zone: either full heating or full heat preservation
- K-Type Thermocouple for Precise Temperature Control.
- Stable Temperature Control with SSR Heating.
- Oil-Groove Structure to Protect Chain from Grease Contamination.

LP-HD-03



Safe Design

- Leakage circuit breaker device
- Grounding device



2-in-1 Sweet Potato & Hot Dog Roaster

LP-PT-02



**Dual-function machine for improved
single-side efficiency**



Specifications

| | |
|-----------|-------------------------------------|
| Material | Stainless steel |
| Voltage | 110V/220V 50-60Hz |
| Power | 1600W |
| Dimension | 45(W)×52(D)×72.5(H)cm |
| Capacity | 14Hot Dogs 6~8 pieces per batch. |

Features



- K-Type Thermocouple for Precise Temperature Control.
- Stable Temperature Control with SSR Heating.
- Supports mode switching for the entire zone: either full heating or full heat.



- The oven adopts a timed heating design, with each interval set to 5 minutes.
- The oven allows forced cancellation of the timer.
- The oven and the warming area have independent temperature controls.

Steam Holding Cabinet (Steam Heated)

| Model | LP-HC-20 | LP-HC-30 | LP-HC-60 | LP-HC-100 |
|-----------|--------------|--------------|---------------|---------------|
| Layer | 2 | 2 | 3 | 5 |
| Power | 700W | 700W | 1400W | 1400W |
| Dimension | 45 x 42 x 48 | 45 x 42 x 68 | 55 x 48 x 103 | 55 x 48 x 147 |

WxDxH (cm) ■ Remarks: Voltage 110V or 220V



Electric Holding Cabinet (Dry Heat)

| Model | LP-HC-20 | LP-HC-40 | LP-HC-60 | LP-HC-110 |
|---------------|--------------|--------------|--------------|---------------|
| Layer | 2 | 2 | 3 | 4 |
| Power | 800W | 800W | 800W | 800W |
| Dimension | 55 x 47 x 60 | 55 x 47 x 80 | 55 x 47 x 90 | 55 x 47 x 100 |
| Storage Space | 49 x 36 x 15 | 49 x 36 x 23 | 49 x 36 x 23 | 49 x 36 x 23 |

WxDxH (cm) ■ Remarks: Voltage 110V or 220V



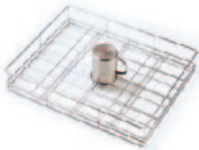
High-Temperature Sterilizer Cabinet

- | **Material** | Stainless steel for both inside and outside
- | **Heating method** | Electric Cabinet heats evenly with heat-proof protection
- | **Water plate design** | The set is able to be dismantled and brushed.
- | **Manipulate interface** | Power switch, heating display, temperature control.
- | **Safety Design** | overheating, power leakage, circuit breakers, earthing device.
- | **Optional product** | thermometer, timer

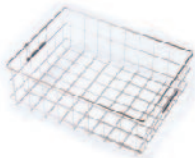


Optional

■ Cup basket



■ Boxed meal basket



LP-HC-130

Warming Display Cabinet Open-door

LP-HC-40-H



Specifications

| | |
|-----------|---------------------------------|
| Dimension | 57(W)×55(D)×77(H) cm |
| Material | Stainless steel, Tempered glass |
| Voltage | 110V/220V 50-60Hz |
| Power | 800W |

Features

- Designed with aerospace-grade insulation materials.
- LED lighting makes food more delicious.
- K-Type Thermocouple for Precise Temperature Control.
- Stable Temperature Control with SSR Heating.

Safe Design

- Leakage circuit breaker device.
- Grounding device.



Security certification

- CNS certified by the Commodity Safety Inspection Bureau.

Optional

- The third layer of laminate.



Warming Display Cabinet Drawer-type

LP-TT-3



Specifications

| | |
|-----------|---------------------------------|
| Dimension | 63(W)×51(D)×70(H) cm |
| Material | Stainless steel, Tempered glass |
| Voltage | 110V/220V 50-60Hz |
| Power | 1600W |

Features

- Designed with aerospace-grade insulation materials.
- Pull-out design won't cause burns.
- Independent control allows for greater flexibility in sales.
- Layered heating provides more even temperature distribution.
- LED lighting makes food more delicious.
- Water tray moisturizing design.

Safe Design

- Leakage circuit breaker device.
- Grounding device.



Security certification

- CNS certified by the Commodity Safety Inspection Bureau.

Optional

- Humidification controller.
- Rear supply sliding door.



Warming Display Cabinet Drawer-type

LP-TT-03 Fit



Specifications

| | |
|-----------|---------------------------------|
| Dimension | 48(W)×57(D)×70(H)cm |
| Material | Stainless steel, Tempered glass |
| Voltage | 110V/220V 50-60Hz |
| Power | 1600W |

Features

- Designed with aerospace-grade insulation materials.
- Pull-out design won't cause burns.
- Independent control allows for greater flexibility in sales.
- Layered heating provides more even temperature distribution.
- LED lighting makes food more delicious.
- Water tray moisturizing design.

Safe Design

- Leakage circuit breaker device.
- Grounding device.



Security certification

- CNS certified by the Commodity Safety Inspection Bureau.

Optional

- Humidification controller.





力霸工業

www.lepa.com.tw

LEPA Industrial Co., Ltd

Service line | +866 2 2832 2200

MAIL inin@lepawater.com.

2-5F, No.6, Fu Guo Rd., Shilin Dist. Taipei City, R.O.C